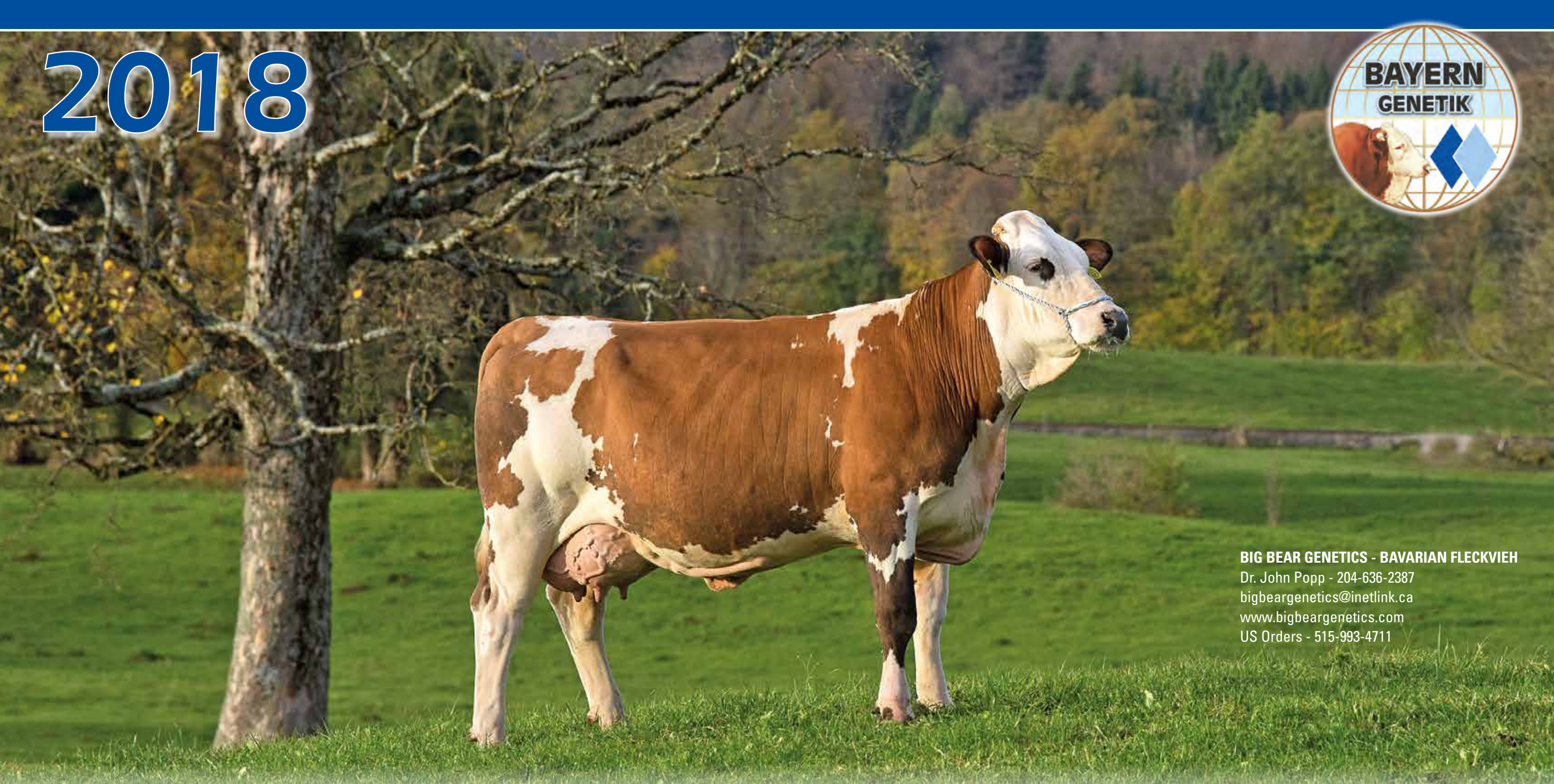


2018



BIG BEAR GENETICS - BAVARIAN FLECKVIEH
 Dr. John Popp - 204-636-2387
 bigbeargenetics@inetlink.ca
 www.bigbeargenetics.com
 US Orders - 515-993-4711

JANUARY

M	T	W	T	F	S	S
1	2	3	4	5	6	7
8	9	10	11	12	13	14
15	16	17	18	19	20	21
22	23	24	25	26	27	28
29	30	31				

FEBRUARY

M	T	W	T	F	S	S
			1	2	3	4
5	6	7	8	9	10	11
12	13	14	15	16	17	18
19	20	21	22	23	24	25
26	27	28				

MARCH

M	T	W	T	F	S	S
			1	2	3	4
5	6	7	8	9	10	11
12	13	14	15	16	17	18
19	20	21	22	23	24	25
26	27	28	29	30	31	

APRIL

M	T	W	T	F	S	S
						1
2	3	4	5	6	7	8
9	10	11	12	13	14	15
16	17	18	19	20	21	22
23	24	25	26	27	28	29
30						

MAY

M	T	W	T	F	S	S
	1	2	3	4	5	6
7	8	9	10	11	12	13
14	15	16	17	18	19	20
21	22	23	24	25	26	27
28	29	30	31			

JUNE

M	T	W	T	F	S	S
					1	2 3
4	5	6	7	8	9	10
11	12	13	14	15	16	17
18	19	20	21	22	23	24
25	26	27	28	29	30	

2018



JULY

M	T	W	T	F	S	S
						1
2	3	4	5	6	7	8
9	10	11	12	13	14	15
16	17	18	19	20	21	22
23	24	25	26	27	28	29
30	31					

AUGUST

M	T	W	T	F	S	S
			1	2	3	4
						5
6	7	8	9	10	11	12
13	14	15	16	17	18	19
20	21	22	23	24	25	26
27	28	29	30	31		

SEPTEMBER

M	T	W	T	F	S	S
						1
						2
3	4	5	6	7	8	9
10	11	12	13	14	15	16
17	18	19	20	21	22	23
24	25	26	27	28	29	30

OCTOBER

M	T	W	T	F	S	S
1	2	3	4	5	6	7
8	9	10	11	12	13	14
15	16	17	18	19	20	21
22	23	24	25	26	27	28
29	30	31				

NOVEMBER

M	T	W	T	F	S	S
				1	2	3
						4
5	6	7	8	9	10	11
12	13	14	15	16	17	18
19	20	21	22	23	24	25
26	27	28	29	30		

DECEMBER

M	T	W	T	F	S	S
						1
						2
3	4	5	6	7	8	9
10	11	12	13	14	15	16
17	18	19	20	21	22	23
24	25	26	27	28	29	30
31						

Sire Line Up 2018

Sire name	Available	Line	Sire	MGS	NAAB	Milk gene	aAa	Milk + kg	Fat	Protein	Frame	Muscularity	Feet and Legs	Udder	Calving ease	Fitness
Dresden G	CDN, USA	Dior	Dryland	Round Up	1067	A1A2		946	-0,19	-0,12	102	99	122	110	104	102
Herzogsstand	CDN, USA	Horex	Hades	Winzer	1065	A2A2	423651	971	-0,03	-0,06	101	93	98	98	97	96
Ice Age PolledS G	USA	Redad	Rosskur	Diderot	1080	A2A2	462531	854	-0,14	-0,11	104	92	107	95	108	95
Illumina	USA	Redad	Imposium	Romel	1066	A2A2		122	0,29	0,08	108	91	105	102	102	98
Inliner	USA	Redad	Ilion	Ruakana	1074	A2A2	435261	359	-0,1	-0,07	109	108	107	99	98	106
Isengard	CDN, USA	Redad	Inhof	Geber	1064	A2A2	561432	740	-0,28	-0,14	89	94	123	108	107	109
Iskara G	CDN, USA	Redad	Ilja	Zasport	1082	A2A2		464	0,07	-0,04	94	103	103	118	108	114
Mahango Pp G	CDN, USA	Metz	Mungo	Round Up	1071	A1A2	423561	978	-0,1	-0,09	109	112	110	109	111	115
Merowinger G	CDN, USA	Metz	Meru	Huascaran	1068	A1A2		585	-0,16	-0,09	96	103	117	114	115	118
Montevideo G	CDN, USA	Metz	Manigo	Rau	1075	A2A2		521	-0,24	-0,06	101	109	122	130	111	127
Passau G	CDN, USA	Planet	Passion	Ronn	1069	A2A2		525	0,07	-0,01	112	110	114	108	89	115
Raffzahn	CDN, USA	Redad	Rau	Zahner	1056	A1A2	534126	244	-0,01	0,05	111	107	98	131	89	101
Rauhfuß	CDN, USA	Romulus	Ruptal	Vanstein	1077	A1A1	534162	743	-0,27	-0,15	107	104	105	117	105	110
Reumut	CDN, USA	Redad	Raufbold	Ruap	1052	A1A2	324156	801	0,04	0,01	100	100	97	117	115	107
Risky G	CDN, USA	Romulus	Ricki	Didimus	1070	A1A2		450	-0,01	0,07	99	100	109	100	117	97
Vanuatu G	CDN, USA	Romulus	Reumut	Sanddorn	1079	A2A2		802	-0,06	0,01	97	101	97	118	109	108
Waldhoer	CDN, USA	Horex	Winnipeg	Ralpon	1009	A1A2	561423	276	-0,02	0,02	98	97	94	106	129	124
Wendlinger	CDN, USA	Horex	Willi	Gebalot	1076	A1A2	456312	1140	-0,21	-0,08	102	87	123	106	107	124
Wildbad	CDN, USA	Horex	Wildwest	Gebalot	1080	A2A2	513642	69	0,28	0,08	103	113	104	112	96	112
Zasport	USA	Zander	Zaster	Sport	1021	A2A2	534162	-57	0,12	0,04	90	106	101	105	98	106
Zechbruder	CDN, USA	Zander	Zauber	Ruap	1081	A1 B		121	0,32	0,04	102	103	105	114	101	114
Ziehsohn G	CDN, USA	Zander	Zahnberg	Vanstein	1078	A2A2		401	0,09	0	95	103	111	117	96	107
Warrior	CDN, USA	Horex	Waterberg		1072	A1A2		young	sire							
Wilcox	CDN, USA	Horex	Winnipeg		1073	A1A2		young	sire							

* G - genomic



◆ BFG DRESDEN



◆ BFG ISENGARD



◆ BFG MEROWINGER



◆ BFG RISKY



◆ BFG PASSAU



◆ BFG VANUATU



◆ BFG ICE AGE



◆ BFG ILLUMINA



◆ BFG ISKARA



◆ BFG MAHANGO



◆ BFG MONTEVIDEO



◆ BFG RAFFZAHN



◆ BFG RAUFUSS



◆ BFG WENDLINGER



◆ BFG WILDBAD